

## DIAPHRAGM



# 007 SERIES

## MODELS

007BDC19  
007CDC19



007BDC19



007CDC19

## FEATURES

- Single cylinder
- Oil-less operation
- Quiet, low pulsating head design
- Permanently lubricated bearings
- Reinforced plastic head and connecting rod assemblies
- Balanced for smooth, low vibration operation
- Long-life diaphragms
- Barb fittings for 1/4" I.D. tubing
- 1/8-27 NPT (007BDC19 only)

Consult factory for custom applications

Thomas Division is an ISO 9001 registered company

**THOMAS**  
A Gardner Denver Product

USAThomas.com

(800) 799-4568 | 3810 Prospect Ave, Ste. A, Yorba Linda, CA 92886

# 007 Performance Data

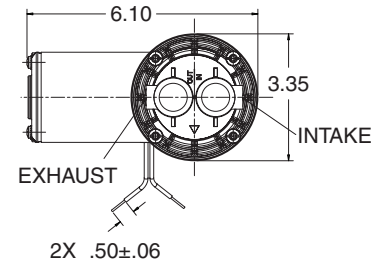
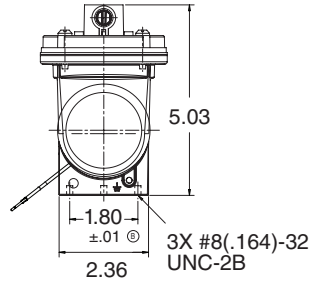
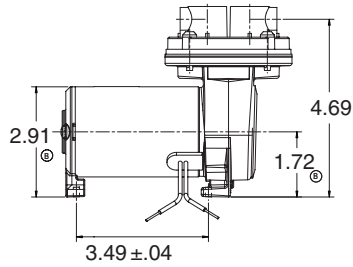
MODEL NUMBER		007BDC19		007CDC19	
HEAD CONFIGURATION		Vacuum		Pressure/Vacuum	
STROKE		.190 Inches		.190 Inches	
PRESSURE		Flow @ 12v		Flow @ 12v	
CFM @ PSI	LPM @ bar				
PSI	bar	CFM	LPM	CFM	LPM
0	0			.65	18.4
5	.5			.61	15.9
10	1.0			.50	11.9
15	1.5			.41	8.3
20	2.0			.32	5.0
25	3.0			.24	
MAX. CONTINUOUS PRESSURE				15 PSI	1.0 bar
MAX. INTERMITTENT PRESSURE				25 PSI	1.7 bar
VACUUM		Flow @ 12v		Flow @ 12v	
CFM @ IN. hg	LPM @ mbar (gauge)				
IN. hg	mbar (gauge)	CFM	LPM	CFM	LPM
0	0	1.15	32.5	.65	18.4
5	-100	.75	25.8	.48	15.6
10	-200	.55	20.2	.34	12.9
15	-400	.34	5.6	.21	7.4
20	-600	.15	6.7		
MAX. VACUUM		23" hg	-780 mbar	23" hg	-780 mbar
MAX. AMBIENT AIR TEMP.		104° F	40°C	104° F	40°C
MIN. AMBIENT START TEMP.		50° F	10°C	50° F	10°C
MAX. RESTART PRESSURE				25 PSI	1.7 bar
MAX. RESTART VACUUM		23" hg	-780 mbar	23" hg	-780 mbar
MOTOR VOLTAGE/FREQUENCY		12v DC		12v DC	
MOTOR TYPE		Perm Magnet		Perm Magnet	
CURRENT AT RATED LOAD (AMPS)		3.8		3.8	
POWER AT RATED LOAD (WATTS)					
STARTING CURRENT (LOCKED ROTOR, AMPS)		36		36	
MIN. FULL LOAD SPEED (RPM)		2800		2800	
THERMAL PROTECTOR		No		No	
NET WEIGHT		2.9 lbs.	1.3 kg	2.9 lbs.	1.3 kg

The information presented in this material is based on technical data and test results of nominal units. It is believed to be accurate and reliable and is offered as an aid to help in the selection of Thomas products. It is the responsibility of the user to determine the suitability of the product for his intended use and the user assumes all risk and liability whatsoever in connection therewith. Thomas Industries does not warrant, guarantee or assume any obligation or liability in connection with this information.

**NOTE:** Models pictured are representative of the series and do not represent a specific model number. Consult factory for detailed physical description.

# Dimensions

## 007BDC



NOTE: ALL TAPPED PORTS ARE 1/8-27 NPT

## 007CDC

